

11'-9" x 22' (skid) "LABORATORY"
 presented to ...

CODE & DESIGN COMPLIANCE

ALBERTA BUILDING CODE 2006	ABC PART 10
OCCUPANCY)	N/A
BUILDING FOOTPRINT	258.50ft ² (24m ²)
BUILDING FIRE SAFETY	ABC PART 10
SPRINKLERED	NO
ROOF LIVE LOAD	3.2 KPA
FLOOR LIVE LOAD	8.2 KPA

CANADIAN ELECTRICAL CODE 2012
 NATIONAL PLUMBING CODE 2010
 GAS CODE-CSA-B149.1-10

Copyrighted Material: No Reproduction of any kind of this document and attachments
 hereto unless with the written consent from Alta-Fab Structures Ltd.
 ©2012 Alta-Fab Structures Ltd.

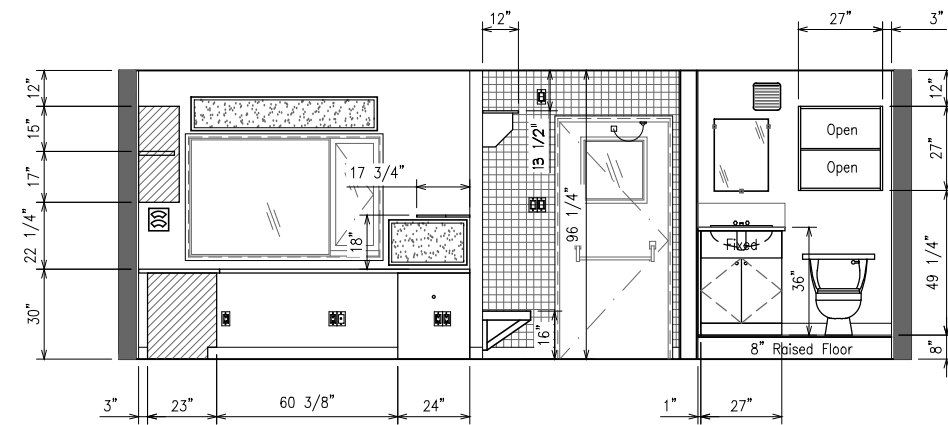
Drawing No. TBA.DWG Drawn By: MC Date: OCT. 04, 2012

ALTA-FAB

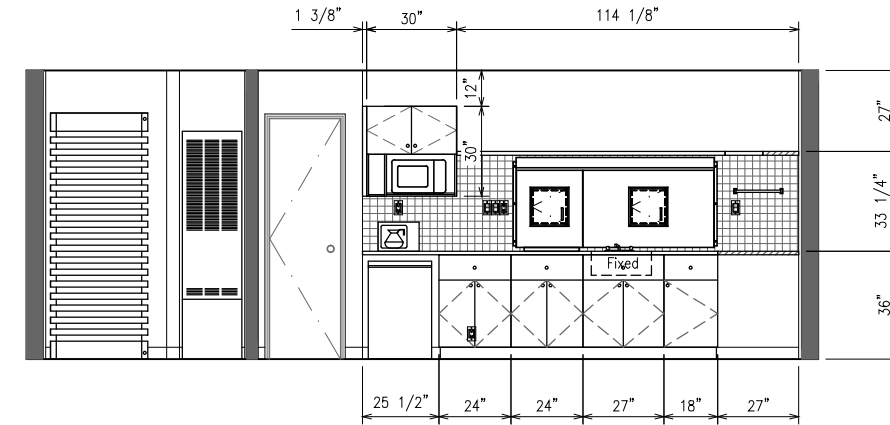
structures ltd.

the Ultimate in transportable buildings ...

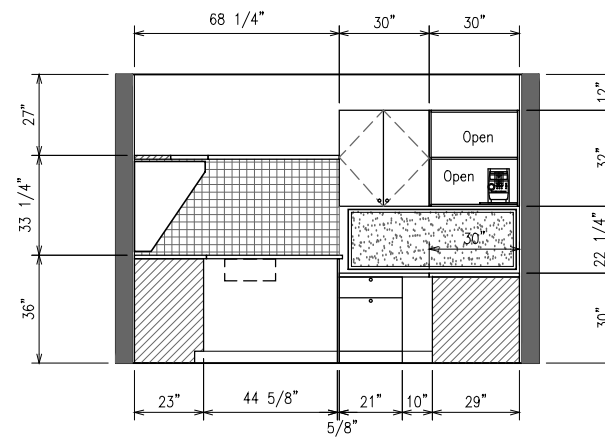
504 - 13th Avenue; Nisku, Alberta T9E 7P6
 telephone: (780)955-7733 fax: (780)955-7851
 toll free: 1-800-252-7990



1
15 | INTERIOR ELEVATION



2
15 | INTERIOR ELEVATION



3
15 | INTERIOR ELEVATION

FINISHING

CERAMALITE	See Color Chart	DOOR TRIM	See Color Chart
BASEBOARD	See Note #1 See Color Chart	WINDOW TRIM	See Color Chart
SHEET TO SHEET	See Note #3	APPLIANCES	Ship Fixed in Place
WALL TO WALL	See Note #3	PACKING MATERIAL	See Parts List
WALL TO CEILING	See Note #3	MISCELLANEOUS	

[1] Entire Unit to be c/w 4" Rubber Basecove

[2] Entrance to be c/w Chrome Inside Corners.

[3] Battens to Match wall Vinyl. *See Color Chart*

INTERIOR ELEVATIONS

091222-S-LAB

Rev:

Client:

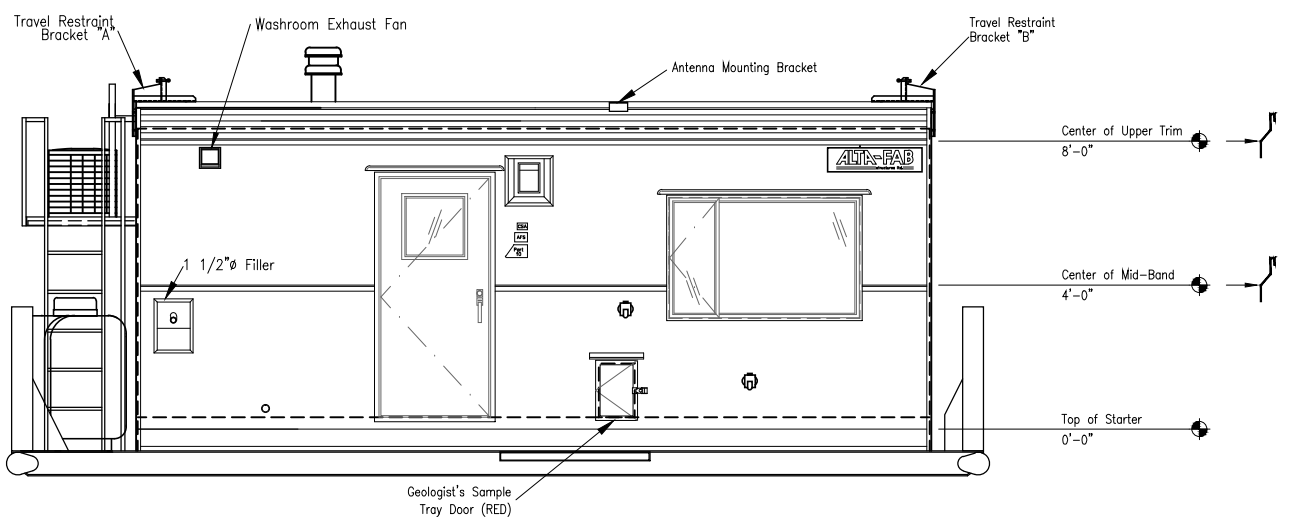
Serial #:

Department:

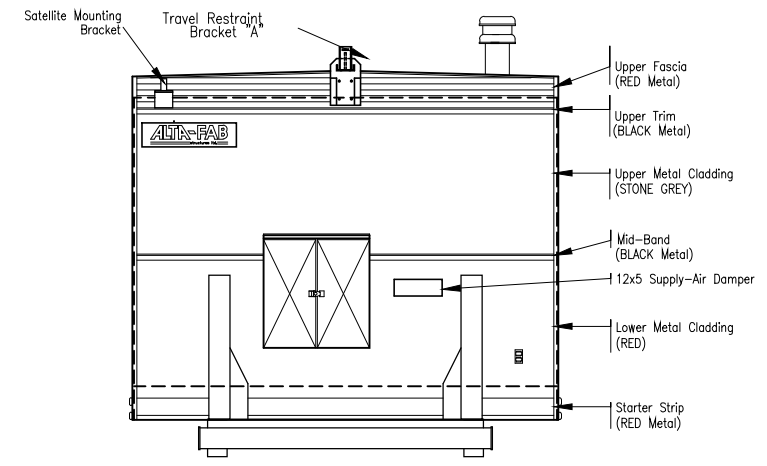
Page:

15

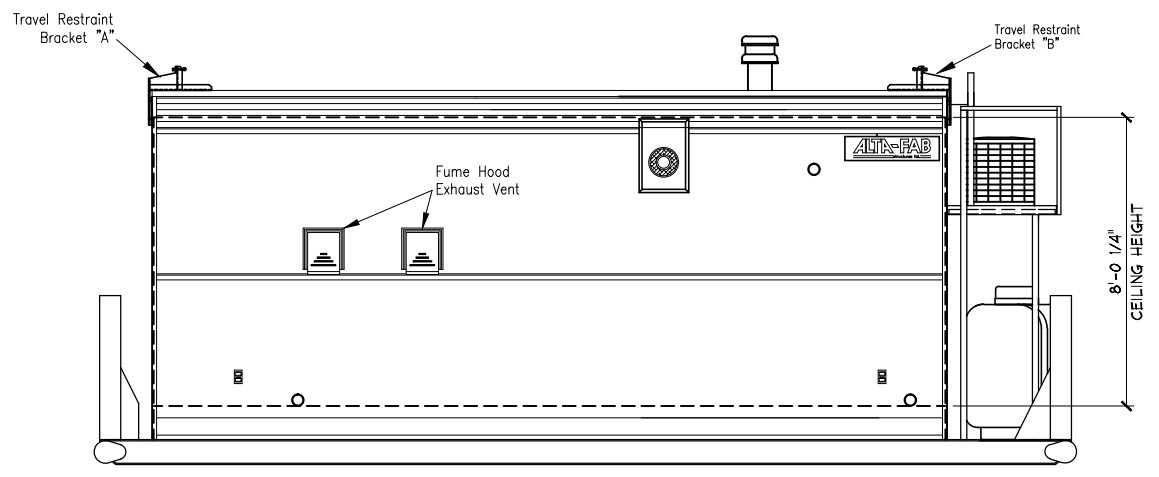
16



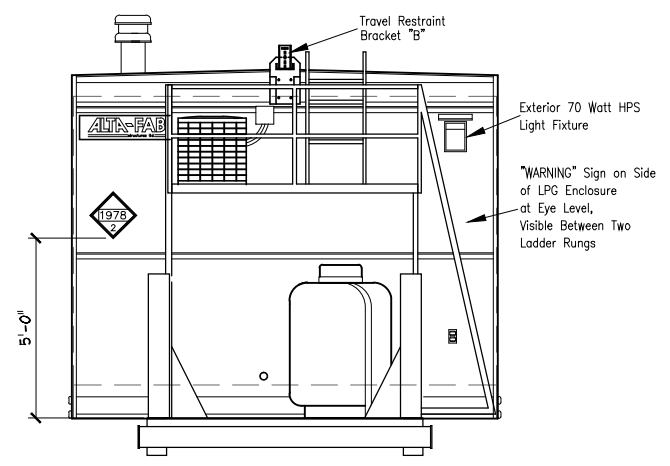
1
16 | **RIG SIDE EXTERIOR ELEVATION**
SCALE : AS SHOWN



3
16 | **BACK END ELEVATION**
SCALE : AS SHOWN



2
16 | **SUMP SIDE EXTERIOR ELEVATION**
SCALE : AS SHOWN



4
16 | **FRONT END ELEVATION**
SCALE : AS SHOWN

EXTERIOR ELEVATIONS

091222-S-LAB

Rev: _____
Client: _____

Serial #: _____

Department: _____

ACCESSORIES

ENTRY KEY CODE	New Keycode	ANGLE COLOR	Black
AFS STICKERS	Red on Stone Grey	EAVES TROUGH	n/a
CLIENT STICKERS	n/a	DOWN SPOUT	n/a
CORNERS	Bend Sheets 1 1/2" x 1 1/2" Angle Iron	DRIP RAIL	Yes
BOTTOM ANGLE	1 1/2"x1 1/2" Steel Angle	MISCELLANEOUS	n/a